



# EMMAUS



## Catholic and Church of England Academy

*'Walking with Jesus as we learn'*

Southend Road, Sheffield, S2 5FT Tel:0114 2766474

Email: [enquiries@emmaus.sheffield.sch.uk](mailto:enquiries@emmaus.sheffield.sch.uk) Website: <http://www.emmaus.sheffield.sch.uk>

Friday 22<sup>nd</sup> May 2026

### May, Month of Mary

In the Catholic tradition, Catholics pray with Mary in May to honour her as the Mother of God and to deepen their spiritual connection with her. The month of May is dedicated to Mary, the Queen of Heaven. It is a time associated with spring and new life which represents Mary who gave Jesus as new life to the world.

During May at Emmaus School, children will pray the Hail Mary prayer and Mrs Twomey will meet children at breaktime to pray the rosary. If you have any prayer intentions this May, please send them to school with your child to pass on to Mrs Twomey.

Hail Mary, full of grace, the Lord is with thee  
Blessed art thou amongst women and blessed is the fruit of thy womb,  
Jesus.

Holy Mary, Mother of God,  
pray for us sinners now and at the hour of our death.  
Amen.



### Good Shepherd Mass

On Tuesday, we are really proud of our worship team, who took part in the Good Shepherd Mass at St Marie's Cathedral. Following the celebration, they went to Victoria Hall, where they joined other schools in a variety of activities to create a collective worship. One of the activities involved designing a jigsaw piece. Each school created their own piece, and when they were all joined together, they formed a powerful symbol of Pentecost and the Fruits of the Spirit. Our school's fruit was **Goodness**, reminding us of the importance of kindness, compassion, and doing what is right in our daily lives.



We are proud to belong to:



**ST CLARE**  
Catholic Multi Academy Trust

## Amended Class Photographs Date

Please note the class photograph date has been changed to 10<sup>th</sup> June.

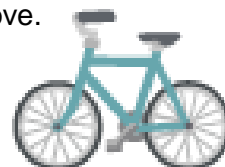
## Parent drop-in, Pat Midgley Centre

On Mondays and Fridays 10-12, there is a chance to chat with other parents and carers or with professionals to help with a range of issues and the chance to get to know other parents in the area.

## Free Children's Learn to Ride sessions

Free Children's Beginners Learn to Ride Sessions for non-riders aged 5 years and above.

On Wednesday 27<sup>th</sup> May, Thursday 28<sup>th</sup> May at Forge Valley School at 9.30 am, 10.45 am, 12.30 pm or 1.45 pm.



For more information and to book visit <https://www.cyclenorth.co.uk/children>. Booking is essential for all sessions.

Bikes and helmets will be provided for your child, but you can bring your own if you wish. These will fill up really quickly and so please keep checking back on Eventbrite for cancellations, if it says sold out.

There are also lots of free ADULT cycling sessions for all abilities in Sheffield, for more information and to book visit: <https://www.cyclenorth.co.uk/adults>

## Class Attendance

The class with the best attendance gets the cup for a week and 5 minutes extra playtime. Well done **Mrs Nicholls's class** for winning the cup and 5 minutes extra playtime this week! Overall attendance last week was **95.2%**.

Week 4- W/B 11<sup>th</sup> May

FS2EH	Y1ED	Y1/2NT	Y2RM	Y3JE	Y3/4KC	Y4KG	Y5MJ	Y5/6JS	Y6ANL
97.6%	93%	91.8%	98.9%	92.2%	93.2%	95.9%	95.8%	93.2%	99.3%

Thank you to all children and parents who attended school every day last week! We love seeing lots of green figures (above 95%)!

## Nut Aware School

Please remember that we are a nut aware school. Children should not bring anything into school for lunchtime that contains nuts e.g. Snicker bars, packets of nuts, peanut butter spread. We have children in school with severe allergies including nut allergies, which can be life threatening.

## Water Bottles

Your child needs a water bottle filled up from home every day. Thank you.

## After School Care

For after school care we have partnered up with MASKK. A member of staff from MASKK will collect any children who are booked in and walk them to the Temple Park Centre. The care is available from after school ends until 6.30pm Mon -Fri.

*We are proud to belong to:*



**ST CLARE**  
Catholic Multi Academy Trust

**IMPORTANT** – If you want to use this after school care you must register:  
Email- maskk.org.uk  
Phone- 0114 239 5739 or 07784838169

## Visitors on Site

We welcome visitors to Emmaus. We would ask that everyone on site:

- To be polite
- To keep mobile phones off and if possible out of sight
- To wear appropriate clothing

The headteacher has the right to set reasonable rules and politely requests they are followed. The headteacher also has the right to stop access to the school site.

## Menu

Week 2

## Breakfast Club

Just a reminder that if a child is brought to Breakfast Club by their **own** parent and the parent stays with them it is free of charge stay. If a child comes without their parent it is £3.50 per session. **If you send your child in with another parent you will still be charged.**



***We're on Facebook: Please follow us for updates on learning and events in school!***  
***<https://www.facebook.com/profile.php?id=10008691985350>***

## Certificates

### **'Learner of the Week'**

The Hub	Jesope O
FS1 CO	Sikander M
FS2 EH	Nwamara U
Y1 ED	Kanan P-T
Y1/2 NT	Nathan F
Y2 RM	Jaanai Q
Y3 JE	Mia J
Y3/4 KC	Iremide O
Y4 KG	Quinn G
Y5 MJ	Alessia W
Y5/6 JS	Gabriella H
Y6 ANL	Asharni V

### **'Simply the Best'**

The Hub	
FS1 CO	Faith M
FS2 EH	Candace E
Y1 ED	Anay G
Y1/2 NT	Asiyah S
Y2 RM	Ada O
Y3 JE	Boo D
Y3/4 KC	Rhea M
Y4 KG	Harry S
Y5 MJ	Alexandra O
Y5/6 JS	Daniella O
Y6 ANL	Ocean A

*We are proud to belong to:*



**ST CLARE**  
Catholic Multi Academy Trust

## Key Dates 2025-26

The dates below are given in good faith and we may have to change some for unforeseen circumstances. We will add to this as soon as more events and dates are confirmed.

<b>25<sup>th</sup> -29<sup>th</sup> May</b>	<b>Half term Holiday</b>
Monday 8 <sup>th</sup> June	Y1 Phonics Screening Check
Friday 17 <sup>th</sup> July	Last day for children
<b>Monday 20<sup>th</sup> July</b>	<b>Inset Day</b>
<b>Tuesday 21<sup>st</sup> July</b>	<b>Inset Day (Last day for staff)</b>

*We are proud to belong to:*



**ST CLARE**  
Catholic Multi Academy Trust